

TENDER BULLETIN

NO.08 OF 2019/20 FY
REF: 10/3/6/5

31 MAY 2019



LIMPOPO

PROVINCIAL GOVERNMENT
REPUBLIC OF SOUTH AFRICA

Bid documents may also be obtained for free from:
www.etenders.gov.za

Provincial Supply Chain Management Office

TABLE OF CONTENTS

| | Page No. |
|--|-----------------|
| 1. REPORTING FRAUDULENT AND CORRUPT ACTIVITIES..... | .03 |
| 2. INSTRUCTIONS..... | .04 |
| 3. BID INVITATION..... | .05 |
| 4. AWARDED BIDS..... | .06-08 |
| 5. CANCELLED BIDS..... | .09 |
| 6. SPECIAL NOTES..... | 10-11 |
| ANNEXURE 1: ADDRESS LIST AND CONTACT DETAILS: PROVINCIAL DEPARTMENTS..... | 12 |
| ANNEXURE 2: ADDRESS LIST AND CONTACT DETAILS: PUBLIC ENTITIES..... | 13 |
| ANNEXURE 3: ADDRESS LIST AND CONTACT DETAILS: PROVINCIAL TREASURY TENDER ADVISE CENTRES | 14 |
| ANNEXURE 4: ADDRESS LIST AND CONTACT DETAILS: SATELLITE OFFICES | 15 |
| 6. SELF REGISTRATION PROCESS..... | 16 |

REPORT

FRAUDULENT & CORRUPT ACTIVITIES ON GOVERNMENT PROCUREMENT SYSTEM

National Anti-Corruption @ 0800 701 701

Security and Investigating Services – Limpopo Provincial Treasury @ 015 298 7196

ALL COMPLAINTS/CONCERNS RELATED TO SCM NON-COMPLIANCE MUST BE REPORTED TO:

LIMPOPO PROVINCIAL TREASURY

PRIVATE BAG X 9486

POLOKWANE

0700

PROVINCIAL TREASURY, FINANCE HOUSE, 56 – 58 PAUL KRUGER STREET, POLOKWANE

2. INSTRUCTIONS

1. Bidders are advised to read the entire tender bulletin.
2. Tenders for procurement of supplies, services and disposals are categorized as follows:

SUPPLIES

- Accommodation, leasing of
- Audio visual equipment
- Building material
- Chemicals: Agricultural/Forestry/
- Laboratory/Water Care
- Clothing/Textiles
- Computer equipment
- Computer software
- Electrical equipment
- Electronic equipment
- Furniture
- General
- Medical
- Office equipment: Labour-saving devices
- Perishable provisions
- Stationary/printing
- Steel
- Timber
- Vehicle (all types)
- Workshop equipment

SERVICES

- Building
- Civil
- Electrical
- Functional (including cleaning-, and security services)
- General
- Maintenance of electrical, mechanical equipment and plumbing
- Mechanical
- Professional
- Repair and maintenance of vehicles
- Transport

DISPOSALS

- Clothing and textiles
- Furniture
- General
- Scrap metal
- Vehicles

3. Bid documents are generally available in English only.
4. The address where a bid document is available from and where it must be submitted to may differ.
5. The addresses at which bid documents may be obtained and to which tenders must be posted, appear in Annexure 1.
6. The address list of various Supply Chain Management Advice Centres at which bid documents and tender bulletins may also be obtained, appear in Annexure 3; and
7. The address list of Supply Chain Management satellite offices at which tender bulletins may also be obtained, appear in

3. BID INVITATIONS FOR SUPPLIES, SERVICES AND DISPOSALS

| BID NO. | DESCRIPTION OF SERVICE OR SUPPLIES | CONTACT DETAILS | BID DOCUMENT PRICE (NON-REFUNDABLE) | DUE AT 11H00 | BID DOCUMENTS OBTAINABLE FROM | POST OR DELIVER BIDS TO |
|--------------------------------------|---|--|-------------------------------------|--------------|---------------------------------|-------------------------|
| | | | | | See Annexure 1 & 2, Page 11- 12 | |
| LDE/B02/2019/20 (LDE/B28/2018/19) | Rendering of Personnel Suitability, Screening Services for Employment purpose for the Limpopo Department of Education Department of Education | ADMINISTRATION PROCESS Ms. Mashilo MP @ Tel: 015 290 7660 MashiloMP@edu.limpopo.gov.za TECHNICAL ASPECTS Mr. Mokomane RS @ Tel: 015 290 7667 MokomaneRS@edu.limpopo.gov.za | R85-00 | 27/06/2019 | 104 | 104 |

4 .AWARDED BIDS

4.1 DEPARTMENT OF HEALTH

RENDERING OF LAUNDRY SERVICES IN THE DEPARTMENT OF HEALTH: LIMPOPO PROVINCE: WATERBERG DISTRICT

| BID NUMBER | BID DESCRIPTION | NAME OF BIDDER | TYPE OF CONTRACT | AMOUNT | HOSPITAL / INSTITUTION | AWARD DATE |
|-------------------|--|--|-------------------------|---------------|-------------------------------|-------------------|
| HEDP 029 - 057/16 | Rendering of laundry services in the Department of Health: Limpopo Province. | Nnenyane Trading cc T/A Everclean Services | Accreditation | R473.23 | Voortrekker Hospital | 28 March 2019 |
| | | | Accreditation | R473.23 | George Masebe Hospital | |
| | | | Accreditation | R473.23 | Mokopane Hospital | |

RENDERING OF LAUNDRY SERVICES IN THE DEPARTMENT OF HEALTH: LIMPOPO PROVINCE: CAPRICORN DISTRICT

| BID NUMBER | BID DESCRIPTION | NAME OF BIDDER | TYPE OF CONTRACT | AMOUNT | HOSPITAL / INSTITUTION |
|-------------------|--|---------------------------------|-------------------------|---------------|-------------------------------|
| HEDP 029 - 057/16 | Rendering of laundry services in the Department of Health: Limpopo Province. | Stevovla's Cleaning & Gardening | Accreditation | R351.33 | Seshego Hospital |
| | | | Accreditation | R351.33 | Helene Franz Hospital |
| | | | Accreditation | R351.33 | WF Knobel Hospital |
| | | | Accreditation | R351.33 | Zebediela Hospital |

LIMPOPO PROVINCIAL TENDER BULLETIN NO 08 OF 2019/20 FY, 31 MAY 2019

RENDERING OF LAUNDRY SERVICES IN THE DEPARTMENT OF HEALTH: LIMPOPO PROVINCE: CAPRICORN DISTRICT

| BID NUMBER | BID DESCRIPTION | NAME OF BIDDER | TYPE OF CONTRACT | AMOUNT | HOSPITAL / INSTITUTION |
|-------------------|--|--|-------------------------|---------------|-------------------------------|
| HEDP 029 - 057/16 | Rendering of laundry services in the Department of Health: Limpopo Province. | Mmapadi Group J/V Ranti Cleaning Washing & Catering Services | Accreditation | R351.33 | Mankweng Hospital |
| | | | Accreditation | R351.33 | Lebowakgomo Hospital |

RENDERING OF LAUNDRY SERVICES IN THE DEPARTMENT OF HEALTH: LIMPOPO PROVINCE: CAPRICORN DISTRICT

| BID NUMBER | BID DESCRIPTION | NAME OF BIDDER | TYPE OF CONTRACT | AMOUNT | HOSPITAL / INSTITUTION |
|-------------------|--|--|-------------------------|---------------|-------------------------------|
| HEDP 029 - 057/16 | Rendering of laundry services in the Department of Health: Limpopo Province. | Nnenyane Trading cc T/A Everclean Services | Accreditation | R351.33 | Pietersburg Hospital |
| | | | Accreditation | R351.33 | Botlokwa Hospital |
| | | | Accreditation | R351.33 | Thabampoop Hospital |

RENDERING OF LAUNDRY SERVICES IN THE DEPARTMENT OF HEALTH: LIMPOPO PROVINCE: MOPANI DISTRICT

| BID NUMBER | BID DESCRIPTION | NAME OF BIDDER | TYPE OF CONTRACT | AMOUNT | HOSPITAL / INSTITUTION |
|-------------------|--|----------------------------|-------------------------|---------------|-------------------------------|
| HEDP 029 - 057/16 | Rendering of laundry services in the Department of Health: Limpopo Province. | Makgasipa Trading Solution | Accreditation | R392.15 | Nkhensani Hospital |
| | | | Accreditation | R392.15 | Malamulele Hospital |
| | | | Accreditation | R392.15 | Van Velden Hospital |
| | | | Accreditation | R392.15 | Maphutha Malatji Hospital |
| | | | Accreditation | R392.15 | Letaba Hospital |
| | | | Accreditation | R392.15 | Evuxakeni Hospital |

LIMPOPO PROVINCIAL TENDER BULLETIN NO 08 OF 2019/20 FY, 31 MAY 2019

| | | | | | |
|--|--|--|---------------|---------|------------------------|
| | | | Accreditation | R392.15 | Dr CN Phatudi Hospital |
| | | | Accreditation | R392.15 | Sekororo Hospital |
| | | | Accreditation | R392.15 | Kgapane Hospital |

| BID NO | AWARDED BIDDER | PROJECT DESCRIPTION | AMOUNT | DATE AWARDED | POINTS |
|--------------------|-----------------------------------|--|------------------|--------------|--------|
| HEDP: 066:18/19 | Tecmed (Pty) Ltd | Supply, delivery, installation, commissioning and maintenance of mobile fluoroscopy (c- arm) | R11 942 659.06 | 08/02/2019 | 92 |
| HEDP 986/17/18 | South African Breast Milk Reserve | Establishment, operation and maintenance of donor human breast milk bank in the Limpopo Department of Health | R1 675 704.25.68 | 15/04/2019 | 100 |

5. CANCELLED BIDS

5.1 DEPARTMENT OF EDUCATION

| TENDER BULLETIN NO | BID NO | PROJECT DESCRIPTION | ADVERTISED DATE | CLOSING DATE | REASON FOR CANCELLATION |
|--------------------|-----------------|---|-----------------|--------------|--|
| 43 of 2018/19 FY | LDE/B28/2018/19 | Rendering of Personnel Suitability Screening for Employment purpose for the Limpopo Department of Education | 01/03/2019 | 25/03/2019 | Department received complaints from service providers from the Districts that they are not accessing the tender documents. |

6. SPECIAL NOTICES

6.2. LIMPOPO PROVINCIAL TREASURY

**6.2.1 (SCM ADVICE CENTERS):
ADVERTISEMENTS OF LIMPOPO CSD CALL CENTRE LINES FOR SUPPLIERS**

LIMPOPO CSD CALL CENTRE LINES FOR SUPPLIERS

| DISTRICT | CALL CENTRE NUMBER | OFFICIAL RESPONSBLE | TIME |
|-----------------|---------------------------|----------------------------|----------------|
| Capricorn | 015 291 2684 | Mr. Kgomo AE | 07H30 TO 16H30 |
| Mopani | 015 812 0256 | Ms. Nxumalo P | 07H30 TO 16H30 |
| Sekhukhune | 013 265 1071 | Mrs Morena MM | 07H30 TO 16H30 |
| Vhembe | 015 962 0014 | Mrs. Nefolovhodwe MQ | 07H30 TO 16H30 |
| Waterberg | 014 717 1376 | Mrs. Tsatsi AT | 07H30 TO 16H30 |

6.2.2 SCM Advice Centres

THE ADVERTISEMENT OF WORKSHOPS/ROADSHOWS AS PER DISTRICT:-

WATERBERG SUPPLY CHAIN MANAGEMENT ADVICE CENTRE

(Centralized Supplier Procurement Workshop program)

| DATE | MUNICIPALITY | VENUE | TARGET | TIME |
|-------------|---------------------|------------------------------|---------------|-------------|
| 12/06/2019 | Lephalale | Lephalale/Traffic Department | Youth | 10H00 |

VHEMBE SUPPLY CHAIN MANAGEMENT ADVICE CENTRE

(Centralized Supplier Procurement Workshop program)

| DATE | MUNICIPALITY | VENUE | TARGET | TIME |
|-------------|---------------------|---------------------|------------------------|-------------|
| 20/06/2019 | Makhado | Makhado Show Ground | Person with disability | 10H00 |

MOPANI SUPPLY CHAIN MANAGEMENT ADVICE CENTRE

(Centralized Supplier Procurement Roadshow program)

| DATE | MUNICIPALITY | VENUE | TARGET | TIME |
|-------------|---------------------|-----------------------|---------------|-------------|
| 20/06/2019 | Letaba | Segepo Community Hall | Youth | 10H00 |

SEKHUKHUNE SUPPLY CHAIN MANAGEMENT ADVICE CENTRE

(Centralized Supplier Procurement Roadshow program)

| DATE | MUNICIPALITY | VENUE | TARGET | TIME |
|-------------|---------------------|--------------|---------------|-------------|
| 27/06/2019 | Fetakgomo Tubatse | Kgautswane | All | 10H00 |

CAPRICORN SUPPLY CHAIN MANAGEMENT ADVICE CENTRE

(Centralized Supplier Procurement Roadshow program)

| DATE | MUNICIPALITY | VENUE | TARGET | TIME |
|-------------|---------------------|--|---------------|-------------|
| 27/06/2019 | Molemolle | Mohodi Ga-Manthatha Tribal Authority Hall | Youth | 10H00 |

LIMPOPO PROVINCIAL TENDER BULLETIN NO 08 OF 2019/20 FY, 31 MAY 2019

ANNEXURE 1: ADDRESS LIST AND CONTACT DETAILS: LIMPOPO PROVINCIAL DEPARTMENTS

| UNIQUE REF. NO. | BID DOCUMENT REFERENCE | CONTACT DETAILS | DOCUMENTS SOLD AT: | DOCUMENTS DEPOSITED AT |
|-----------------|------------------------|---|--|---|
| 100 | DSDP | Tel: 015 293 6000 Fax: 015 293 6211 Website: www.limpopo.gov.za | Department of Social Development , Office No. 57 Ground Floor, 21 Biccadd Street POLOKWANE | Deposited in the box located at Department of Social Development, 21 Biccadd Street Polokwane |
| 101 | LPT | Tel: 015 298 7000 Fax: 015 295 7010 Website: www.limpopo.gov.za | Provincial Treasury 46 Hans Van Rensburg Street, POLOKWANE and all Provincial Treasury Tender Advice Centres | Deposited in the bid box located outside a guard house at Ismini Towers, 46 Hans Van Rensburg Street, Polokwane |
| 101A | TC/LP | Tel: 015 291 8400 Fax: 015 295 3310 Website: www.limpopo.gov.za | Provincial Treasury 56 – 58 Paul Kruger Street, POLOKWANE and all Provincial Treasury Tender Advice Centres | Deposited in the bid box located in the main entrance, Finance House Building, 56-58 Paul Kruger Street, Polokwane |
| 102 | PRDP | Tel: 015 287 6000 Fax: 015 295 3840 Website: www.limpopo.gov.za | Office of the Premier , 40 Hans van Rensburg Street, POLOKWANE and all SCM Advice Centres | Deposited in the bid box located at Mowaneng Building, 40 Hans van Rensburg Street, Polokwane |
| 103 | HEDP | Tel: 015 293 6000 Fax: 015 293 6211 Website: www.limpopo.gov.za | Department of Health , Office No. D3 Ground Floor, Old Capricorn Building, 18 College Street, POLOKWANE and all Provincial Treasury Tender Advice Centres | Deposited in the box located at Department of Health and Social Development, 18 College Street, Polokwane |
| 104 | LPEDT | Tel: 015 290 7600/1 Fax: 015 297 4494 Website: www.limpopo.gov.za | Department of Education , Corner 113 Biccadd and 24 Excelsior Streets, POLOKWANE and all Provincial Treasury Tender Advice Centres | Deposited in the bid box located in the main entrance of corner 113 Biccadd Street and Excelsior Street, Polokwane |
| 105 | PUDP | Tel: 015 295 1000 Fax: 015 295 1163 Website: www.limpopo.gov.za | Department of Roads & Transport , 40 Paul Kruger Street, POLOKWANE and all Provincial Treasury Tender Advice Centres | Deposited in the bid box located at 1 st Floor, Paul Kruger Wing, 40 Paul Kruger Street, Polokwane |
| 106 | DSSL | Tel: 015 290 2900 Fax: 015 291 4452 Website: www.limpopo.gov.za | Department of Safety, Security and Liaison , 32 Schoeman Street, POLOKWANE and all Provincial Treasury Tender Advice Centres | Deposited in the bid box located in the main entrance of 32 Schoeman Street, Polokwane |
| 107 | COGHSTA | Tel: 015 294 2000 Fax: 015 295 4190 Website: www.limpopo.gov.za | Department of Co-Operative Governance, Human Settlements & Traditional Affairs , 28 Market Street, Office No. G 74, Ground Floor, Polokwane. | Deposited in the bid box located at Hensa Towers, Cnr of Rabe and Landdros Mare Streets, Polokwane |
| 108 | DSAC | Tel: 015 284 4000 Fax: 015 284 4514 Website: www.limpopo.gov.za | Department of Sport, Arts and Culture Olympic Towers, Corner Rabe and Biccadd Street, POLOKWANE and all Provincial Treasury Tender Advice Centre | Deposited in the bid box located in the main entrance of Olympic Towers, Corner 21 Rabe and Biccadd Street, Polokwane |
| 109 | LEDET | Tel: 015 293 8300 Fax: 015 293 8319 Website: www.limpopo.gov.za | Department of Economic Development, Environment & Tourism , 90 Bok Street, POLOKWANE and all SCM Advice Centres | Deposited in the bid box located in the main entrance of Evridiki Towers, 19 Biccadd Street, Polokwane |
| 110 | LDPW & WODP | Tel: 015 284 7000 Fax: 015 284 7031 Website: www.limpopo.gov.za | Department of Public Works, Roads and Infrastructure ; Towers, 43 Church Street, POLOKWANE and all Provincial Treasury Tender Advice Centres | Deposited in the bid box located at Corner Blaawberg and River Street Ladanna Polokwane 0699 Private Bag X9490 Polokwane 0700 |
| 111 | ACDP | Tel: 015 294 3000/30/60/90/20 Fax: 015 294 4506 Website: www.limpopo.gov.za | Department of Agriculture , Temo Towers, 69 Biccadd Street, POLOKWANE and all Provincial Treasury Tender Advice Centres | Deposited in the bid box located in the main entrance of AgriVillage, 69 Biccadd Street, Polokwane |

LIMPOPO PROVINCIAL TENDER BULLETIN NO 08 OF 2019/20 FY, 31 MAY 2019

ANNEXURE 2: ADDRESS LIST AND CONTACT DETAILS: LIMPOPO PUBLIC ENTITIES

| UNIQUE REF. NO. | BID DOCUMENT REFERENCE | CONTACT DETAILS | DOCUMENTS SOLD AT: | DOCUMENTS DEPOSITED AT |
|-----------------|------------------------|--|---|---|
| 112 | RFB: LIMP | Tel: 015 293 3621 Fax: 015 293 3660 Website: www.golimpopo.co | State Information Technology Agency (SITA) Limpopo Office, Moolman Building, 27 Market Street, POLOKWANE, 0699 | Bid box located in the Main Entrance of Moolman Building, 27 Market Street, Polokwane |
| 113 | LTA | Tel: 015 293 3600 Fax: 015 293 3655 Website: www.golimpopo.com | Limpopo Tourism Agency , ERF 92/688, Portion 2 Southern Gateway, Ext 4, N1 Main Road, Polokwane 0699 | Bid box located in the offices ERF 92/688, Portion 2 Southern Gateway, Ext 4, N1 Main Road, Polokwane 0699 |
| 114 | LGB | Tel: 015 295 5581 Fax: 015 295 3566 Website: www.lgb.org | Limpopo Gambling Board , 22 Schoeman Street, POLOKWANE, from 08H30 to 16H00 | Bid box located in the main entrance, ground floor, 22 Schoeman Street, Polokwane |
| 115 | LEDA | Tel: 015 633 4700 Fax: 015 633 4854 Website: www.leda.co.za | Limpopo Economic Development Agency Enterprise Development Finance, Main Road Lebowakgomo | Bid box located in the main entrance, Enterprise Development Finance, Main Road Lebowakgomo |
| 116 | RAL | Tel: 015 284 4600 Fax: 015 284 4701 Website: www.ral.co.za | Road Agency Limpopo (RAL) , RAL Towers, 26 Rabe Street, POLOKWANE, 0700 | Bid box located in the entrance foyer (ground floor) of RAL Towers, at 26 Rabe Street, Polokwane |
| 117 | GAAL | Tel: 015 288 0122 Fax: 015 288 0346 Website: www.gaal.co.za | Gateway Airports Authority Limited , N1 Road to Louis Trichardt, Army Base, POLOKWANE International Airport, Polokwane, 0700 | Bid box located in the main entrance, ground floor of administration building, Polokwane International Airport, Army Base |
| 118 | VIVET | Tel: 015 963 3156 Fax: 015 963 3154 Website: www.fetcol@mweb.co.za | Vhembe FET College , Stand No. 203, Unit A, Sibasa, 0970, Limpopo Province | Vhembe Fet College, Central Office, Private Bag X2136, SIBASA 0970 |
| 119 | WTVET | Tel: 015 491 8581/8602 Fax: 015 491 8579 Website: www.procurement@waterbergcollege.co.za | Waterberg FET College , Central Office, 36 Hooge Street Street, Mokopane, 0600 | Waterberg FET College , Central Office, 36 Hooge Street Street, Mokopane, Private Bag x 2449, Mokopane 0600 |
| 120 | GNT | Tel. 015 291 2641 Fax. 015 291 2648 | No. 130a Marshall Street, Polokwane.0700 | Great North Transport No. 130 Marshall Street, Polokwane.0700 |
| 122 | MT | Tel. 015 2907715/7772 | 113 Biccard Street, Polokwane.0700 | Private Bag Bag X9489 Polokwane.0700 |
| 123 | CCTVET | Tel.015 230 1800 Fax. 015 291 2767 | Capricorn College for TVET 16 Market Street, Polokwane | Private Bag Bag X9674 Polokwane0700 |

LIMPOPO PROVINCIAL TENDER BULLETIN NO 08 OF 2019/20 FY, 31 MAY 2019

ANNEXURE 3: ADDRESS LIST AND CONTACT DETAILS: PROVINCIAL TREASURY TENDER ADVICE CENTRES

(Tender bulletins and bid documents are obtainable from the following Centers):

| PROVINCIAL TREASURY SUPPLY CHAIN MANAGEMENT ADVICE CENTRES | |
|--|---|
| <p>HEAD OFFICE</p> <p>Provincial Supply Chain Management Office 56 – 58 Paul Kruger Street POLOKWANE Private Bag x9494 POLOKWANE, 0700 Tel No. (015) 291 8400</p> <p>Contact: Ms. M.B Rakubu @ Tel: 015 291 8717/6</p> | <p>Capricorn SCM Advice Centre</p> <p>Limpopo Provincial Treasury 56-58 Paul Kruger Street Private Bag x9494 POLOKWANE, 0700 Tel No. (015) 291 8400</p> <p>Contact Person: Ms. M.M. Masindi</p> |
| <p>Vhembe SCM Advice Centre</p> <p>Limpopo Provincial Treasury Government Building Complex BLOCK E GROUND FLOOR THOHOYANDOU, VENDA Tel: (015) 962 1752 Fax: (015) 962 1282</p> <p>Contact Person: Ms. A Manena</p> | <p>Mopani SCM Advice Centre</p> <p>Limpopo Provincial Treasury Private Bag X 1973 GIYANI, 0826 Tel: (015) 812 0149 Fax: 086 219 7905</p> <p>Contact Person: Mr. G Muravha</p> |
| <p>Waterberg SCM Advice Centre</p> <p>Limpopo Provincial Treasury 98 Nelson Mandela Street Decimale Building MODIMOLLE Tel: (014) 717 5837 Fax: (014) 717 5670</p> <p>Contact Person: Mr. AT Tsatsi</p> | <p>Sekhukhune SCM Advice Centre</p> <p>Limpopo Provincial Treasury Lefa Centre, Schoonoord Road JANE FURSE Tel: (013) 265 1344 Fax: (013) 265 1354</p> <p>Contact Person: Mr. M. S. Sehale</p> |

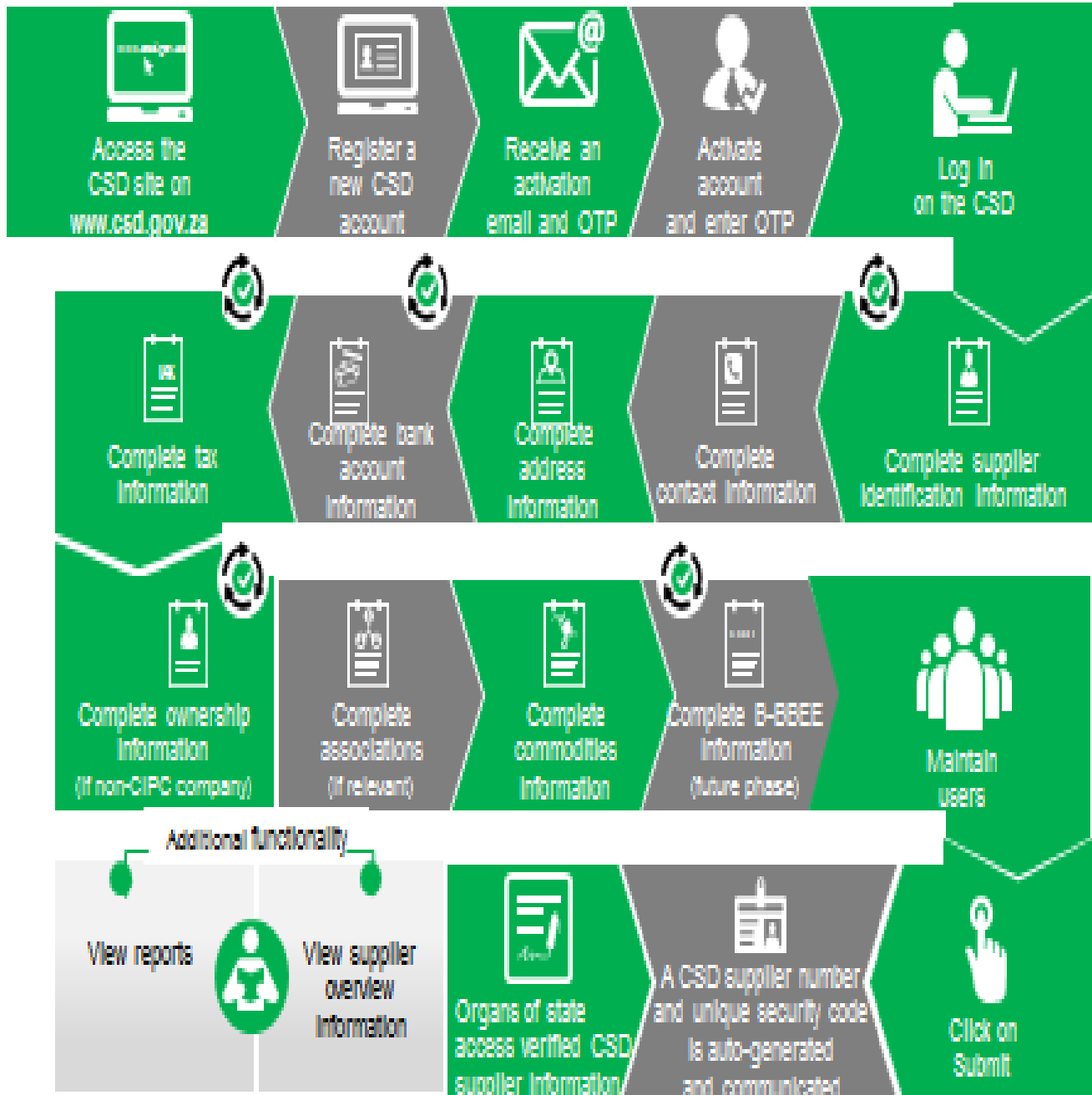
LIMPOPO PROVINCIAL TENDER BULLETIN NO 08 OF 2019/20 FY, 31 MAY 2019

ANNEXURE 4: ADDRESS LIST AND CONTACT DETAILS: SATELLITE OFFICES

(Tender bulletins are obtainable from the following centers)

| CAPRICORN | VHEMBE | MOPANI | WATERBERG | SEKHUKHUNE |
|-----------|--------|--------|---|------------|
| | | | Libsa Thabazimbi: No.08 Riet Bok Street Tel. No. (014) 772 2437 | |
| | | | Libsa Lephalale No. 3A Venter Street Tel. No. (014) 763 2834 | |

Supplier Self-Registration Process



Auto verification of supplier information with SARS, GPC etc.